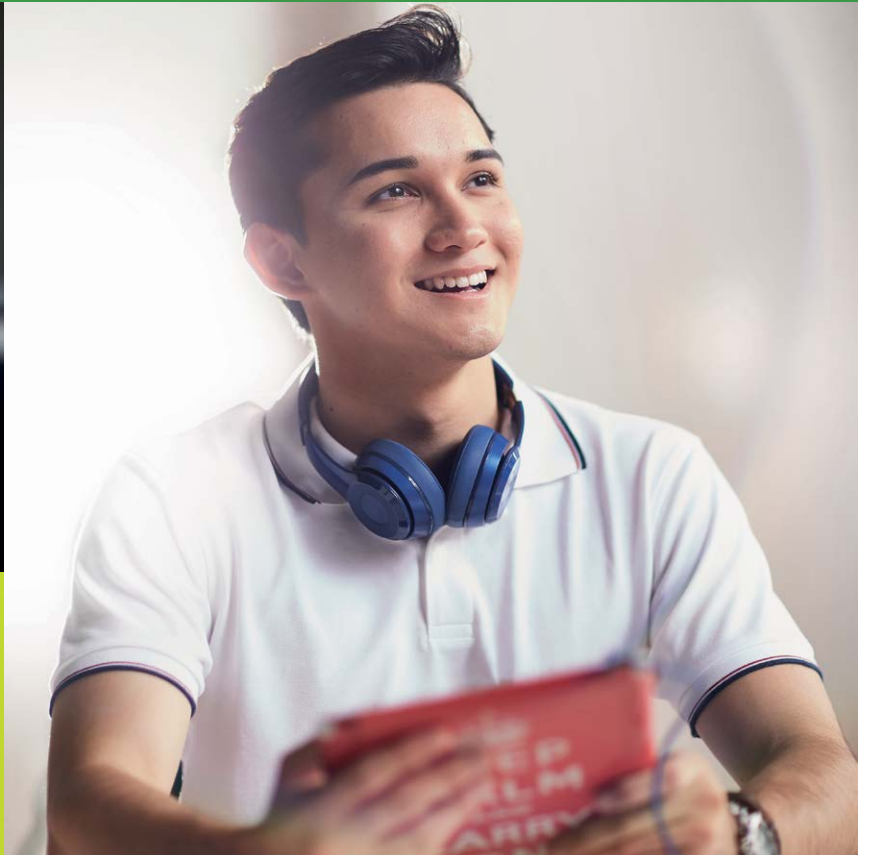


FOUNDATION IN ARTS FOUNDATION IN SCIENCE





OUR MISSION

To help people succeed in life and to live a life of significance through education

OUR VISION

- To be a university with a strong culture of quality and leadership that focuses on sound academic standards, continuous improvements, and the talent development of students and staff
- To be a university that offers a learning experience that enhances career development, lifetime values and personal fulfilment
- To be a university with a strong research focus in our key areas of excellence
- To be a university that shares our success with the stakeholders and communities we serve

OUR VALUES

- Pride of Achievement
- Sharing Success
- The Courage to Be
- To be Compassionate
- To be Significant

FOUNDATION FOR THE FUTURE

The role of education has evolved and has undergone a paradigm shift from one which focuses on purely imparting knowledge one that focuses on nurturing resilient individuals for the global job market. We live in turbulent times where volatility, uncertainty, complexity and ambiguity (VUCA) is the order of the day.

There is a pressing need to embrace change and to meet the demands of the global environment filled with a myriad of challenges. The right type of education is what determines success or failure.

What is truly needed is an all-encompassing education that takes cognisance of student needs and catering to their multiple intelligences. Every student is different, and it is imperative to recognise their true potential. Finding their passion and building resilience is key to overall development.

The pre-university stage is a critical period for human capital development. The focus of this stage has to be on assessing student attitudes and aptitudes and determining their suitability for different professions. Thus, the premise of HELP Matriculation Centre's Foundation in Arts and Foundation in Science programmes is to provide an environment and a platform for students to free their minds from prejudices and insecurity and prepare them for the path ahead with the right values, competencies and confidence.

The Foundation programmes' international recognition lends credence to the quality of the course. Students have the flexibility to choose from multiple disciplines, whether locally and abroad, when the time comes for them to enter university.

At HELP Matriculation Centre, we believe not only in preparing our students to become employable graduates, but we also believe strongly in the importance of creating

principled graduates who will be conscientious and respectful to the environment that we live in. Students who are prepared to deal successfully with the volatility, uncertainty, complexity and ambiguity of the current world need one important thing: a strong Cutting Edge foundation for the future.

Dhanesh Balakrishnan
Dean, Faculty of University Foundation Studies





PROGRAMME EDUCATIONAL OBJECTIVES (PEO)

- Produce students with relevant knowledge and thinking skills to meet the demands of undergraduate study.
- Produce students who are able to execute scientific and practical skills with the ability to collaborate and communicate effectively in preparation for undergraduate study.
- Produce students who demonstrate competency in using digital applications and essential numerical skills to meet the demands of undergraduate study.
- Produce responsible students who show continuous desire in autonomous learning for undergraduate study.

PROGRAMME LEARNING OUTCOMES (PLO)

- Demonstrate adequate knowledge and understanding required for undergraduate study.
- Use critical and creative thinking skills required for undergraduate study.
- Practice a range of practical skills required for undergraduate study.
- Express effective verbal and non-verbal communication required for undergraduate study.
- Use digital applications to gather and present information required for undergraduate study.
- Demonstrate essential numerical skills for undergraduate study.
- Adopt personal responsibility with minimal guidance required for undergraduate study.
- Initiate autonomous learning and adopt an inquisitive mindset required for undergraduate study.

HELP MAKE YOUR CAREER WITH A STRONG

F	Flexible programmes offering various options	
O	Optimistic worldview	
U	Unique and unrivalled comprehensive curriculum	
N	Nurturing right values	
D	Data driven to meet the demands of IR4.0	
A	Analytical and creative thinking emphasised	
T	Talent and character build winning personality	
I	Innovative and different	
O	Other Centred	
N	Novel – challenging students to venture into uncharted territory	

OUR VISION

To be a university with a strong culture of quality and leadership that focuses on sound academic standards, continuous improvement, and the talent development of students and staff.

To be a university that offers a learning experience that enhances career development, lifetime values and personal fulfilment.

To be a university with a strong research focus in our key areas of excellence.

To be a university that shares our success with the stakeholders and communities we serve.

OUR MISSION

To help people succeed in life and to live a life of significance through education.



FOUNDATION IN ARTS

(R3/0011/3/0050) (07/29) (A10668)

PROGRAMME

- 50 credit hours
- 3 semesters / 14 weeks per semester
- 13 courses (9 core + 4 electives)
- Coursework / Assignments – 50% and Examination - 50%

SEMESTER 1 COURSES (5 core = 18 credit hours)

- Intermediate English (4 credit hours)
- Finite Mathematics (4 credit hours)
- Computing Principles (4 credit hours)
- Study Skills (3 credit hours)
- Personal Development and Leadership (3 credit hours)

SEMESTER 2 COURSES (2 core + 2 electives = 16 credit hours)

- Advanced English (Pre-requisite: Intermediate English) (4 credit hours)
- Critical Thinking Skills (4 credit hours)
- 2 Electives

SEMESTER 3 COURSES (2 core + 2 electives = 16 credit hours)

- Culture, Arts and Politics (4 credit hours)
- Statistics (4 credit hours)
- 2 Electives

ELECTIVES* (each elective subject = 4 credit hours)

- Principles of Accounting
- Introduction to Business Principles
- Calculus
- Fundamentals of Early Childhood Education
- Economics Principle
- Introduction to Human Communication
- Introduction to Legal Studies
- Introduction to Marketing
- Introduction to Programming
- Public Speaking and Presentation Skills
- Psychology for Personal Development
- Introduction to Tourism and Hospitality

* Subject to availability



FOUNDATION IN SCIENCE

(R3/0011/3/0049) (07/29) (A10667)

PROGRAMME

- 50 credit hours
- 3 semesters / 14 weeks per semester
- 13 courses (8 core + 4 Sc Core + 1 Elective)
- Coursework / Assignments – 50% and Examination - 50%

SEMESTER 1 COURSES (5 core = 18 credit hours)

- Intermediate English (4 credit hours)
- Calculus (4 credit hours)
- Computing Principles (4 credit hours)
- Study Skills (3 credit hours)
- Personal Development and Leadership (3 credit hours)

SEMESTER 2 COURSES (2 Core + 2 Sc Core = 16 credit hours)

- Advanced English (4 credit hours)
- Critical Thinking Skills (4 credit hours)
- 2 Sc Core

SEMESTER 3 COURSES (1 Core + 2 Sc Core + 1 Elective = 16 credit hours)

- Culture, Arts and Politics (4 credit hours)
- 2 Sc Core + 1 Elective

SCIENCE CORE (must complete two sets)

(Each core course = 4 credit hours)

- Biology I: Molecules, Cells & Energy
- Biology II: Systems & Functions (Pre-requisite: Biology I)
- Chemistry I: Elements, Compounds & Organic Chemistry 1
- Chemistry II: Thermochemistry & Organic Chemistry 2 (Pre-requisite: Chemistry I)

ELECTIVES* (each elective subject = 4 credit hours)

- Finite Mathematics
- Introduction to Programming
- Physics I: Mechanics, Light & Optics
- Psychology for Personal Development
- Statistics

* Subject to availability

ENTRY REQUIREMENTS

FOUNDATION IN ARTS

- 5 SPM/SPMV Credits including a pass in Bahasa Melayu and History
- 5 O-Level credits
- 3 Bs in UEC
- Other equivalent qualifications recognised by the Malaysian Government

FOUNDATION IN SCIENCE

- 5 SPM/SPMV Credits. At least a credit in Mathematics and 2 Science subjects (Biology/Chemistry/Physics) and a pass in Bahasa Melayu and History.
- 5 O-Level Credits. At least a credit in Mathematics and 2 Science subjects (Biology/Chemistry/Physics)
- 3B's in UEC. At least a credit in Mathematics and 2 Science subjects (Biology/Chemistry/Physics)
- Other equivalent qualifications recognised by the Malaysian Government

ENGLISH REQUIREMENT

FOR INTERNATIONAL STUDENTS

- IELTS = 4
- TOEFL = 30-31
- MUET = 3
- PTE = 36

Students are exempt from the English Requirement:

- If they are from English speaking countries.
- Has IGSCE, IB, American Highschool Diploma, SPM or any other recognised qualifications.

INTAKES

January, May, July, September

ADDITIONAL PREREQUISITES

Students wishing to pursue the following undergraduate programmes are required to meet the following prerequisites in SPM or equivalent qualifications:

ACCOUNTING & FINANCE

- Credit in Mathematics
- Pass in English

BUSINESS

- Pass in Mathematics and English

COMMUNICATION

- Credit in English

COMPUTER SCIENCE / SOFTWARE ENGINEERING

- Credit in Additional Mathematics

INFORMATION TECHNOLOGY

- Credit in Mathematics

PSYCHOLOGY

- Credit in Mathematics
- Credit in one Science / General Science subject
- A in English

TEACHING ENGLISH AS A SECOND LANGUAGE

- Pass in English

DENTISTRY, MEDICINE AND PHARMACY

- 5 Bs each in Biology, Chemistry, Physics, Mathematics (or Additional Mathematics) and another subject



BUSINESS

(Accounting, Banking, Economics, Entrepreneurship, Hospitality, Human Resources, International Business, Marketing, Management)

SPM → FOUNDATION IN ARTS/SCIENCE (1 YEAR)



3+0

MALAYSIA

HELP University

2+1

AUSTRALIA

- University of Queensland
- Griffith University
- University of Wollongong

UNITED KINGDOM

- Middlesex University
- University of the West of England Bristol
- University of Hertfordshire
- Bangor University

1+2

AUSTRALIA

- University of Melbourne
- Australian National University
- Queensland University of Technology
- University of Technology Sydney
- Macquarie University
- Western Sydney University

UNITED KINGDOM

- University of Bristol
- Queen's University of Belfast
- University of Portsmouth
- University of Leeds
- Cardiff University
- University of Liverpool
- University of Sussex
- University of Essex

NEW ZEALAND

- Victoria University of Wellington

DIRECT ENTRY*

AUSTRALIA

- Monash University
- University of Adelaide
- University of New South Wales
- University of Queensland
- University of Sydney
- Bond University
- Federation University
- Deakin University
- Flinders University
- Macquarie University
- Murdoch University
- University of South Australia
- Swinburne University of Technology
- University of Technology Sydney

NEW ZEALAND

- Massey University
- University of Canterbury
- University of Waikato

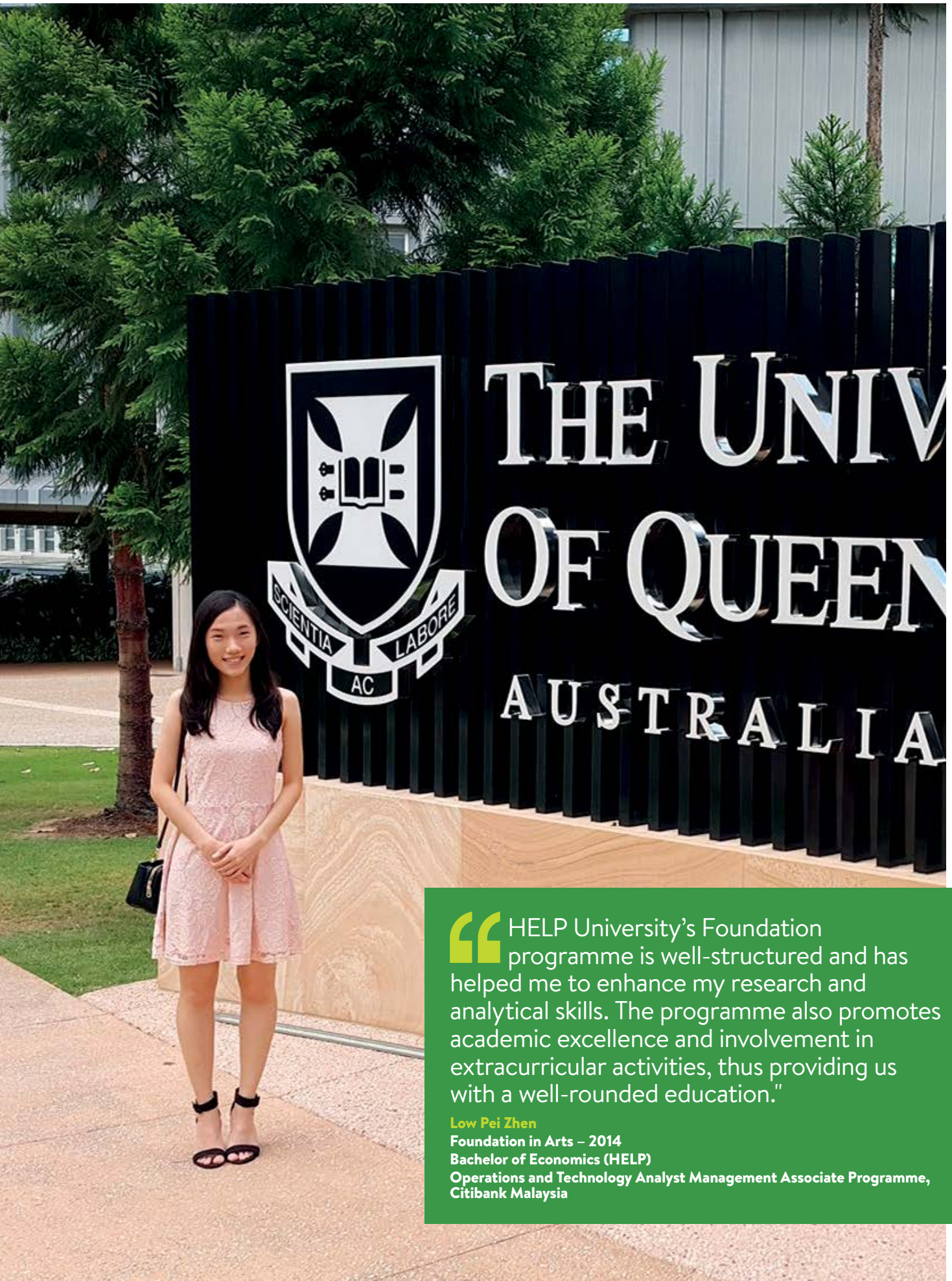
UNITED STATES OF AMERICA

- University of Maine

UNITED KINGDOM

- University of Leeds
- University of Surrey
- Queen's University of Belfast
- University of Essex
- University of Liverpool
- Swansea University
- Cardiff University
- Aberystwyth University
- Nottingham Trent University
- University of Portsmouth
- University of the West of England, Bristol
- Bangor University
- Northumbria University
- Oxford Brookes University
- Middlesex University
- University of Chester
- University of Derby

- Teesside University
- York St John University
- Leeds Beckett University
- Wrexham Glyndwr University
- University College Birmingham
- University of Nottingham (Malaysia Campus)
- INTO University of East Anglia
- INTO University of Exeter
- INTO University of Manchester (NCUK)
- INTO University of Newcastle



“HELP University’s Foundation programme is well-structured and has helped me to enhance my research and analytical skills. The programme also promotes academic excellence and involvement in extracurricular activities, thus providing us with a well-rounded education.”

Low Pei Zhen

Foundation in Arts – 2014

Bachelor of Economics (HELP)

Operations and Technology Analyst Management Associate Programme,
Citibank Malaysia

PSYCHOLOGY

SPM → FOUNDATION IN ARTS/ SCIENCE (1 YEAR)



3+0

MALAYSIA

- HELP University*
- * Completed HELP Foundation with a minimum of 4 credits
- University of Reading

2+1

AUSTRALIA

- Murdoch University
- Queensland University of Technology
- University of Adelaide
- Edith Cowan University
- Deakin University
- University of South Australia

UNITED KINGDOM

- Bangor University
- Middlesex University
- University of Northampton
- University of Portsmouth
- University of the West of England Bristol
- University of Hertfordshire

NEW ZEALAND

- University of Otago

2+2

AUSTRALIA

- Macquarie University

1+2

AUSTRALIA

- University of Queensland (1+2 & 1+3)
- Bond University

UNITED KINGDOM

- Goldsmiths University of London
- Queen's University of Belfast
- University of Essex
- University of Leeds
- University of Plymouth
- University of Sheffield
- Aberystwyth University
- Cardiff University
- Northumbria University
- Huddersfield University

1+3.5

AUSTRALIA

- University of Queensland

DIRECT ENTRY*

AUSTRALIA

- Monash University
- University of Adelaide
- University of New South Wales
- University of Queensland
- Bond University
- Deakin University
- Flinders University
- Macquarie University
- Murdoch University
- University of South Australia
- Swinburne University of Technology
- University of Wollongong

NEW ZEALAND

- Massey University
- University of Waikato
- University of Canterbury

UNITED KINGDOM

- University of Leeds
- University of Essex
- Aberystwyth University
- University of Portsmouth
- University of Reading
- University of the West of England, Bristol

- Northumbria University
- Middlesex University
- University of Northampton

UNITED STATES OF AMERICA

- University of Maine

*Direct entry subject to meeting universities' requirements

“HMC was straightforward, fast and simple to decide for me. The elements designed have exposed me enough to make a decision for my pursuit of degree education.”

Sam Kon

Foundation in Arts, 2006

HELP BPsych (Second Upper Hons)

**Chief Operating Officer (COO) of
Beyond Infinity Consultancy (Malaysia)**



COMMUNICATION

(Media Studies, Public Relations, Marketing Communication)

SPM → FOUNDATION IN ARTS/ SCIENCE (1 YEAR)



3 + 0

MALAYSIA

- HELP University

2 + 1

AUSTRALIA

- Queensland University of Technology
- University of South Australia
- Edith Cowan University

UNITED KINGDOM

- Hertfordshire University
- University College Birmingham
- University of Essex

1 + 2

AUSTRALIA

- University of Queensland
- Deakin University
- University of New South Wales
- University of Adelaide

UNITED KINGDOM

- Swansea University
- Middlesex University

DIRECT ENTRY*

AUSTRALIA

- Monash University
- University of Adelaide
- University of New South Wales
- University of Queensland
- University of Sydney
- Bond University

- Flinders University
- Macquarie University

NEW ZEALAND

- Massey University
- University of Waikato
- University of Canterbury

UNITED KINGDOM

- University of Leeds
- University of Essex
- Northumbria University
- Middlesex University
- Hertfordshire University
- University of Chester
- York St John University

- Leeds Beckett University
- Institute of Technology Carlow, Ireland
- Teesside University

**Direct entry subject to meeting universities' requirement*

INFORMATION TECHNOLOGY

(Information Technology, Computer Science, Data Analytics, Software Engineering)

SPM → FOUNDATION IN ARTS/ SCIENCE (1 YEAR)



3 + 0

MALAYSIA

- HELP University

2 + 1

AUSTRALIA

- University of Queensland
- University of Technology Sydney
- Griffith University

UNITED KINGDOM

- University of Essex

NEW ZEALAND

- The Eastern Institute of Technology

2 + 2

UNITED KINGDOM

- Coventry University

CHINA

- Beijing Jiaotong University

1.5 + 1.5

AUSTRALIA

- Macquarie University

1 + 2

AUSTRALIA

- Macquarie University
- Western Sydney University
- Murdoch University
- University of Adelaide

UNITED KINGDOM

- University of Essex
- Swansea University

DIRECT ENTRY*

AUSTRALIA

- Monash University
- University of New South Wales
- University of Queensland
- Bond University
- Federation University
- Flinders University
- Macquarie University

- Murdoch University
- University of South Australia
- Swinburne University of Technology
- University of Technology Sydney

NEW ZEALAND

- Massey University
- University of Waikato
- University of Canterbury

UNITED KINGDOM

- University of Essex
- University of Portsmouth
- Northumbria University

- University of the West of England, Bristol
- Middlesex University
- University of Chester
- York St John University
- Teesside University

**Direct entry subject to meeting universities' requirements*



“The Foundation in Arts course played a significant role in helping me decide my career path. I met some of the most dedicated and passionate lecturers who were not only concerned with the syllabus and academic materials, but also paid close attention in ensuring the development of soft skills which are essential at the workplace.”

Emeline Khoo

Foundation in Arts (2014)

Recipient of the Lord Templeman Scholarship (2016)

LLB First Class Honours, University of the West of England, Bristol (2017)

Bar Professional Training Course, University of the West of England, Bristol (2018)

LAW

SPM → FOUNDATION IN ARTS / SCIENCE (1 YEAR)



MALAYSIA

HELP University Bachelor of Laws

2 + 1

UNITED KINGDOM

(UK Law Degree Transfer Programme)

- University of Leeds
- University of Liverpool
- Cardiff University
- Aberystwyth University
- University of the West of England, Bristol
- Northumbria University
- University of Hertfordshire

DIRECT ENTRY*

- University of Essex
- Aberystwyth University
- Northumbria University
- University of Hertfordshire

**Direct entry subject to meeting universities' requirements*

EARLY CHILDHOOD EDUCATION

SPM → FOUNDATION IN ARTS (1 YEAR)



3 + 0

MALAYSIA

- HELP University

2 + 1

UNITED KINGDOM

- University College Birmingham

1 + 2

UNITED KINGDOM

- University of Leeds

DIRECT ENTRY*

AUSTRALIA

- Monash University

UNITED KINGDOM

- Middlesex University
- University College Birmingham

NEW ZEALAND

- University of Canterbury

**Direct entry subject to meeting universities' requirements*

UNITED STATES

SPM → FOUNDATION IN ARTS / SCIENCE
(1 YEAR)



1 + 1 + 2

UNIVERSITY OF MAINE

- Business
- Psychology

Applicable for both Foundation in Arts and Foundation in Science

HOSPITALITY & TOURISM

SPM → FOUNDATION IN ARTS (1 YEAR)



3 + 0

MALAYSIA

- HELP University

2 + 1

AUSTRALIA

- Griffith University

UNITED KINGDOM

- University College of Birmingham

1½ + 1½

AUSTRALIA

- University of South Australia

1 + 2

NEW ZEALAND

- University of Otago

DIRECT ENTRY*

AUSTRALIA

- Flinders University
- University of Technology Sydney

UNITED KINGDOM

- University of Essex
- Aberystwyth University
- Northumbria University
- Middlesex University
- York St John University
- University College Birmingham

NEW ZEALAND

- University of Canterbury

**Direct entry subject to meeting universities' requirements*

ENGINEERING

(Chemical, Civil, Electrical & Electronic,
Mechanical, Mechatronic)

**SPM → FOUNDATION IN SCIENCE
(1 YEAR)**



3 + 0

MALAYSIA

- University of Southampton, Malaysia*
(4+0, MEng in Mechanical, Electrical & Electronic, Aeronautical & Astronautical)
- AIMST University

DIRECT ENTRY*

AUSTRALIA

- Monash University
- University of Queensland
- Federation University
- Flinders University
- Macquarie University
- Swinburne University of Technology
- University of Wollongong
- University of Technology Sydney

NEW ZEALAND

- Massey University
- University of Canterbury

UNITED KINGDOM

- University of Leeds
- University of Sheffield
- Queen's University Belfast
- University of Portsmouth
- University of the West of England, Bristol
- Northumbria University
- University of Chester
- Teesside University
- Wrexham Glyndwr University
- INTO University of Exeter
- INTO Glasgow Caledonian University

**Direct entry subject to meeting universities' requirements*



“My dream of pursuing a degree in Psychology started with HMC's Foundation in Arts. Its wide array of interesting electives provided a good starting point for my career in Psychology. The experienced and qualified lecturers were both supportive and challenging when necessary. Within the short span of one year, this foundation prepared me well to excel in my graduate and postgraduate academic journey.”

Sita Lakshmi

Foundation in Arts - 2010

Bachelor of Psychological Science (Flinders)

DENTISTRY

SPM → FOUNDATION IN SCIENCE (1 YEAR)



DIRECT ENTRY*

MALAYSIA

- AIMST University
- Penang International Dental College

MEDICINE

SPM → FOUNDATION IN SCIENCE (1 YEAR)



DIRECT ENTRY*

MALAYSIA

- International Medical University (IMU)
- Newcastle University Medicine Malaysia (NUMed)
- RCSI & UCD Malaysian Campus (RUMC)
- AIMST University

GRENADA, WEST INDIES

- St George's University

** Direct entry subject to meeting the universities' requirements*

PHARMACY

SPM → FOUNDATION IN SCIENCE (1 YEAR)



DIRECT ENTRY*

MALAYSIA

- International Medical University (IMU)
- Asia Metropolitan University
- AIMST University

AUSTRALIA

- Monash University
- University of Queensland

UNITED KINGDOM

- University of Bath
- Aston University
- University of Portsmouth

** Direct entry subject to meeting the universities' requirements*

SCIENCES

(Applied Science, Biomedical, Biotech, Food Science and any science related discipline)

SPM → FOUNDATION IN SCIENCE (1 YEAR)



DIRECT ENTRY*

MALAYSIA

- International Medical University (IMU)
- AIMST University

AUSTRALIA

- Monash University
- University of Adelaide
- University of New South Wales
- University of Queensland
- Flinders University
- Macquarie University
- Swinburne University of Technology
- University of Technology Sydney
- University of Wollongong

NEW ZEALAND

- University of Canterbury

UNITED KINGDOM

- University of Leeds
- University of Sheffield
- University of Essex
- Aberystwyth University
- University of Portsmouth
- University of the West of England, Bristol
- Northumbria University
- University of Chester
- University of Northampton
- Teesside University
- Institute of Technology Carlow, Ireland

** Direct entry subject to meeting the universities' requirements*



HMC's Vision for Tomorrow

The department's vision is to provide students with an internationally recognised pre-university program which is widely accepted.

HELP MATRICULATION CENTRE

HELP University
university of achievers

Why the HELP Foundation?

- A Foundation program that is fully accredited by MQA
- A flexible program which offers a broad-based education providing exposure to a wide range of disciplines, thus allowing students to make an informed choice when deciding on a future course
- Small class size for effective learning
- Experienced and committed lecturers with proven track records
- Recognition by universities in the United Kingdom, New Zealand and other countries
- Cultural exchange and exposure to a healthy mix of cultures
- Value added subjects including Leadership, Study Skills, Personal Development, Personal Finance, Personal Culture, Arts and Music, and Critical Thinking
- Leadership training provided by professional psychologists in the following areas:
 1. self-confidence and self-esteem
 2. dealing with fear
 3. dealing with change
 4. team work
 5. conflict resolution

Our Philosophy

To provide students with a holistic education by ensuring that they receive good quality teaching, a recognised and accepted pre-university qualification, an opportunity to be involved in extracurricular activities and good pastoral care.

UNIVERSITY RECOGNITION

MALAYSIA

- International Medical University (IMU)
- Newcastle University Medicine Malaysia (NUMed)
- RCSI & UCD Malaysian Campus (RUMC)
- Asia Metropolitan University
- AIMST University
- Penang International Dental College

AUSTRALIA

- Bond University
- Deakin University
- Federation University
- Flinders University
- Macquarie University
- Monash University
- Murdoch University
- Swinburne University of Technology
- University of Adelaide
- University of New South Wales
- University of Queensland
- University of South Australia
- University of Sydney
- University of Technology Sydney
- University of Wollongong

UNITED KINGDOM

- Aberystwyth University
- Aston University
- Bangor University
- Cardiff University
- Hertfordshire University
- INTO Glasgow Caledonian University
- INTO University of East Anglia
- INTO University of Exeter
- INTO University of Manchester (NCUK)
- INTO University of Newcastle
- Leeds Beckett University
- Middlesex University
- Northumbria University
- Nottingham Trent University
- Oxford Brookes University
- Queen's University of Belfast
- Swansea University
- Teesside University
- University College Birmingham
- University of Bath
- University of Bristol
- University of Chester
- University of Derby
- University of Essex
- University of Hertfordshire
- University of Leeds
- University of Liverpool
- University of Northampton

- University of Nottingham (Malaysia Campus)
- University of Portsmouth
- University of Reading
- University of Sheffield
- University of Southampton (Malaysia Campus)
- University of Surrey
- University of the West of England, Bristol
- Wrexham Glyndwr University
- York St John University

NEW ZEALAND

- Massey University
- University of Canterbury
- University of Waikato

UNITED STATES OF AMERICA

- Hawai'i Pacific University
- University of Maine

GRENADA, WEST INDIES

- St. George's University

IRELAND

- South East Technological University
- Technological University of the Shannon Midlands Midwest

HMC LEADERSHIP PROGRAMME

One of HMC's strong beliefs is that developing character is just as important as providing an all-rounded and holistic education. True to that belief, HELP Matriculation Centre's programme has introduced a leadership camp to nurture the students' character.

At the camp, students are motivated to uplift their sense of self-worth as well as encourage them to acquire important qualities such as self-ownership, effective communication, leadership and teamwork as well as planning and flexibility for future endeavours.



Community Service



AniHELP



Leadership Camp



Community Service



Leadership Camp



C2AGE



Student Facilitator Training



Orientation Hangout



End Semester Party



Student Facilitator Training



AniHELP



End Semester Party



C2AGE

DEAN



DHANESH BALAKRISHNAN

**LLB (Hons) (London), LLM (UKM) CLP, MBA (CSturt), Certificate in Taxation (HELP)
Dean, Faculty of University Foundation Studies and Senior Lecturer**

Dhanesh joined HELP University in 1994 as a Lecturer. He has taught various subjects at the pre-university and the undergraduate level. Dhanesh travels extensively locally and abroad giving talks on holistic

education. In addition, he conducts seminars for the benefit of teachers. The topics include handling difficult students, teaching and learning, classroom management and leadership in the education sector.

HEAD OF DEPARTMENT



LIM CHEAU YANN

**BSc (Econs) Hons, MPA (Pub Policy) (Malaya)
Senior Lecturer**

As the Head of Department, Lim Cheau Yann oversees all academic and administrative matters of the department. She is responsible for ensuring the department is in line with the university's vision and mission and to nurture the growth of the department on par with the Industrial Revolution 4.0.

DEPUTY HEAD OF DEPARTMENT AND QUALITY ASSURANCE



NG YOU MING

**BForestry Sc (First Class Hons), MSc (Youth Studies) (UPM)
Senior Lecturer**

The Quality Assurance Division aims to maintain the integrity of proper documentation at the departmental level. The division coordinates and collaborates with the Department Academic Board (DAB) in ensuring the documents are regularly updated and are in line with the requirements of Malaysian Qualifications Agency (MQA) and the Ministry of Higher Education (MOHE).

DEPARTMENT ACADEMIC BOARD



IRMA HERAWATI

**BA (EngLit) (Tennessee),
TESL (American Associate Degree)
Senior Lecturer**

Irma Herawati manages the Department Academic Board which oversees the quality of the courses provided in the department. The purpose of the Department Academic Board is to ensure the highest quality of teaching and assessment is maintained in the department. The Board comprises all academic staff of the department.

PROGRAMME LEADERS



SANGEETHA MURTY

**BSc Biotechnology (Monash),
MBiotech (Malaya)
Senior Lecturer**



ISKANDAR DZULKARNAIN

**AHMAD JUNID
BA (English Lang & Lit) Hons (IIUM),
MPAdmin (UM)
Senior Lecturer**

The roles of the programme leaders are to coordinate and maintain standards of teaching and learning, course and curriculum development and also the overall management of the courses.



ALEX CHIN YU TUCK
BA Economics & Psychology
(Swinburne)
Senior Lecturer



SYAFIQ AMRI
BA (Linguistics & Lit) Hons,
MA (English Literary
Studies) (IIUM)
Senior Lecturer



DEVARAJ KANAGARAJOO
BHosp and Tourism Mgmt
(Hons) (Taylors), MBA (MSU)
Lecturer



DHARMINDER SINGH
BA Hons (English) (UPM),
MAppPsy in Coaching
(HELP), Certified
Professional Coach (ICF),
Certified HRDF Trainer (TTT)
Senior Lecturer



**THAYALARANI A/P
SINGANAYAGAM**
BSc (Math) Hons,
MEd (Malaya)
Senior Lecturer



**KANNAN S/O
SHANMUGAM**
Dip Acct, BFinance (Hons)
(UUM), MSc (Finance) (UUM)
Lecturer



**MOHD NAJMUDDIN
BIN SUKI**
BCompSc (Software Engr)
Hons (Malaya)
Senior Lecturer



**WILLIAM GUALBERT
QUAH SIEW BENG**
BBA (Bus Econ),
MBA (Mk/Int Bus) (San Diego)
Senior Lecturer



MARKO FABIAN
BEd TESL (Hons) (UNITAR),
MArts (Curriculum Studies)
(USM)
Lecturer



PONNI ALAGAPPAN
BSc (Hons) Biochemistry
(University of Delhi),
MSc Biotechnology
(Bharathidasan University)
Senior Lecturer



WILLIAM YEO KIM HONG
BSc (App Math/Comp)
Hons (UTAR), MEd (OUM)
Senior Lecturer



NORAISHAH GULNAZIR
BArts Linguistics (Hons)
(UNIMAS), MPhil (English
Language Studies) (UKM)
Lecturer



R MURALI RAJARATENAM
BSc (Microbiology) Hons,
MESL (Malaya)
Senior Lecturer



WINNIE LEONG WAI LING
BBus (Info Sys) (Swinburne)
Senior Lecturer



AARON HONG KAI JEAT
BSc Physics (Hons) (with
Merit) (UTAR), MEngSc
(UTAR)
Lecturer



**SELINA NALINI
RICHARDS**
BA (Eng Lit & Indo/Malay
Studies) Hons (Monash), BSc
(Psych) (cum laude (Upper
Iowa), MCouns (HELP)
Senior Lecturer



YU MAY LEEN
BSc Computing (Oxford
Brookes),
MSc (Comp Sc) (Malaya)
Senior Lecturer



AYESWARY SIVARAJAH
BA TESL (HELP),
Master in Cross-cultural
Communication and Applied
Linguistics (Newcastle),
CELTA certificate
Lecturer



SIVA SUBRAMANIAM A/L NADESAN
BSc Hons Comp & Inf Systems
(Oxford Brookes), NCC International
Diploma in Computer Studies (NCC,
UK), MSc (Distinction) Technology
Management (Staffordshire)
Senior Lecturer

A DAY IN HELP SUBANG 2

Life in HELP is more than studies and exams. We are a lively and enriching community, offering a diverse range of fun activities and events, and top notch facilities.



7.30 AM

Start a new day by preparing for your classes at the open access computer laboratories in the library.



8.00 AM

Attend your first class of the day in one of the many classrooms and lecture halls.



12.00 PM

Grab a tasty lunch or treat yourself to a coffee under the green boughs in the gardens.



1.00 PM

Got a question? Have a chat with the education advisors at the Customer Marketing Department.



1.30 PM

Attend a talk by one of our many guest lecturers in our spacious multi-purpose hall.



3.00 PM

Check in to the library to recharge yourself with a quick nap or read in the naturally lighted spaces.



4.30pm

Take a break and challenge your friends to a game of pool or hang out in the spacious student lounge.



5.00pm

Take a dip in the swimming pool or break a sweat in the football field or tennis court.



6.30pm

Worried about the rain? Well, you can always get active with some sporting activities in our indoor hall.



8.00pm

Wind down and chill or catch up with your studies before the library closes at 9.30pm.



SCAN TO FOLLOW US
ON SOCIAL MEDIA



HELP UNIVERSITY SDN BHD

Company Registration Number: 198201005211 (84963-D)
MOHE Approval Number: DU028(W)

ELM Business School

No. 15, Jalan Sri Semantan 1, Off Jalan Semantan, Bukit Damansara, 50490 Kuala Lumpur
Tel: 03-2716 2000

Subang Bestari Campus

Persiaran Cakerawala, Subang Bestari, Seksyen U4, 40150 Shah Alam, Selangor
Tel: 03-7849 3000



+6012-928 0864



university.help.edu.my



study@help.edu.my